



**Flare Summary** 01/04/2023 to 01/05/2023

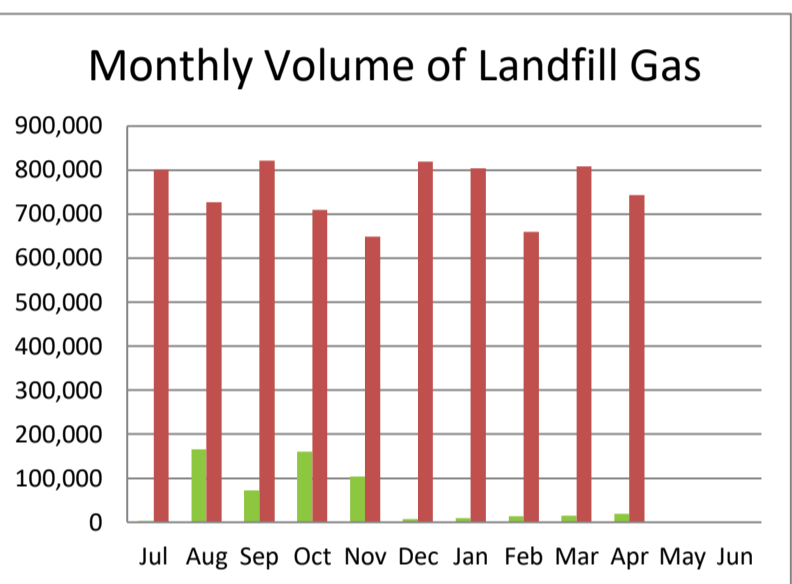
Volume of landfill gas flared	19,200 m <sup>3</sup>	(current month)
Cumulative volume of landfill gas flared	568,868 m <sup>3</sup>	(financial year to date)
Average flow rate	27 m <sup>3</sup> /h	(current month)
Hours in reporting period	721.0 hours	(current month)
Flare combined operation hours	68.9 hours	(current month)

**Average Gas Composition**

Methane	N/A %	(current month)
Carbon Dioxide	N/A %	(current month)
Oxygen	N/A %	(current month)
Carbon dioxide equivalent methane combusted (CO <sub>2</sub> e)	N/A tonnes	(current month)

**Gas Volume by Month** FY 2022/23

Month	m <sup>3</sup>			CO <sub>2</sub> e		Generated kWh
	Flares	REF	Total	Flares	REF	
Jul	2,492	801,307	803,799	N/A	8,197.32	1,463,808
Aug	166,113	727,402	893,515	N/A	6,972.26	1,247,064
Sep	72,193	821,538	893,731	696.90	7,683.52	1,354,961
Oct	159,814	709,727	869,541	1,478.83	6,725.05	1,161,452
Nov	104,145	648,409	752,554	989.48	6,331.14	1,096,677
Dec	7,367	818,869	826,236	N/A	8,066.13	1,438,176
Jan	9,007	803,602	812,609	N/A	7,444.22	1,288,203
Feb	13,399	660,082	673,481	N/A	6,297.68	1,083,123
Mar	15,138	808,088	823,226	N/A	7,654.59	1,313,576
Apr	19,200	742,841	762,041	N/A	7,542.82	1,357,425
May						
Jun						
<b>Totals</b>	<b>568,868</b>	<b>7,541,865</b>	<b>8,110,733</b>	<b>3,165.21</b>	<b>72,914.73</b>	<b>12,804,465</b>



**Renewable Energy Facility**

Volume of landfill gas utilised	742,841 m <sup>3</sup>	(current month)
Average flow rate less down time	1,039 m <sup>3</sup>	(current month)
Average flow rate calendar month	1,030 m <sup>3</sup> /h	(current month)
Generated kWh	1,357,425 kWh	(current month)
Average methane composition of landfill gas	53.3 %	(current month)
Average carbon dioxide composition of landfill gas	N/A %	(current month)
Average oxygen composition of landfill gas	N/A %	(current month)
Power station operation	714.30 hours	(current month)
Cumulative station hours	1,377.03 hours	(current month)
Carbon dioxide equivalent methane combusted (CO <sub>2</sub> e)	7,542.82 tonnes	(current month)

**REF Comments**

Utility trips 21.9 engine hours downtime.

**Gas Field Comments**